



**KEFI**  
GOLD + COPPER

**H.E MINISTER FOR MINES ASKED FOR A CASE STUDY  
DEVELOPING MINERALS PROCESSING FOR A  
DIVERSIFIED, SUSTAINABLE FUTURE**

**25 November 2024**

**VISION  
PLAN  
RECRUIT**

# VISION

TO WIN MORE OF THE US\$180B P.A. GLOBAL MINING INVESTMENT

# PLAN

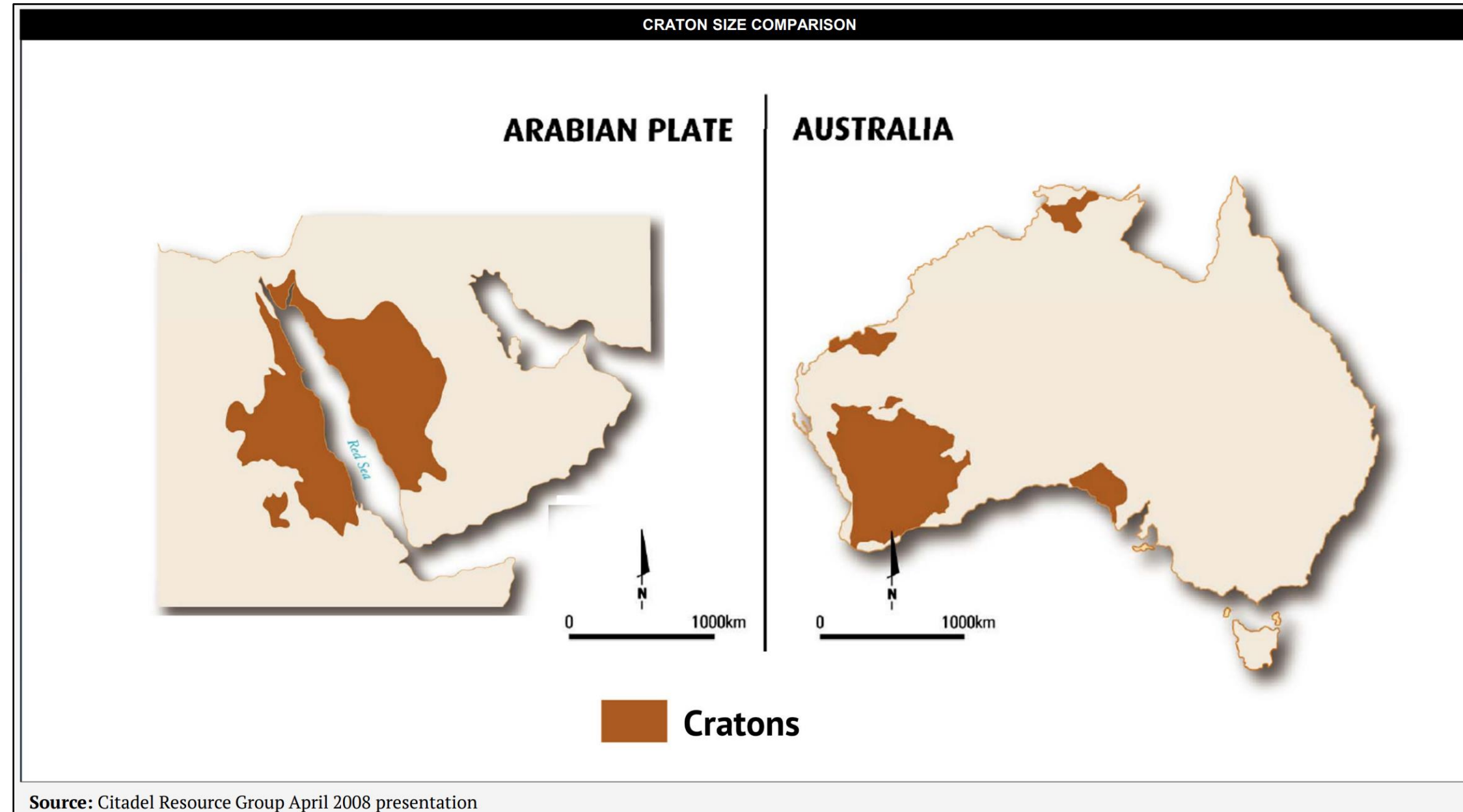
A FASTER TRACK TO UNLOCK ETHIOPIA'S MINERAL RESOURCES

# RECRUIT

MANY COMPETENT EXPLORERS BY PROMOTING OPPORTUNITY

# VISION

WESTERN AUSTRALIA HAS SIMILAR GEOLOGY AND PROVIDES  
A USEFUL CASE STUDY ON CERTAIN ASPECTS



# **VISION** | WA INDICATES A HUGE POTENTIAL FOR ETHIOPIA

ETHIOPIA MINERALS EXPORTS TODAY ARE UNDER US\$1 BILLION PER ANNUM.

EVEN IF ETHIOPIA IS ONLY 50% AS PROSPECTIVE PER HECTARE AS WA , IT CAN TARGET US\$42 BILLION PER ANNUM.

WA TOOK 50 YEARS. ETHIOPIA ONLY NEEDS 20. NO NEED TO REPEAT WA'S LESSONS. LEARN FROM OTHERS.



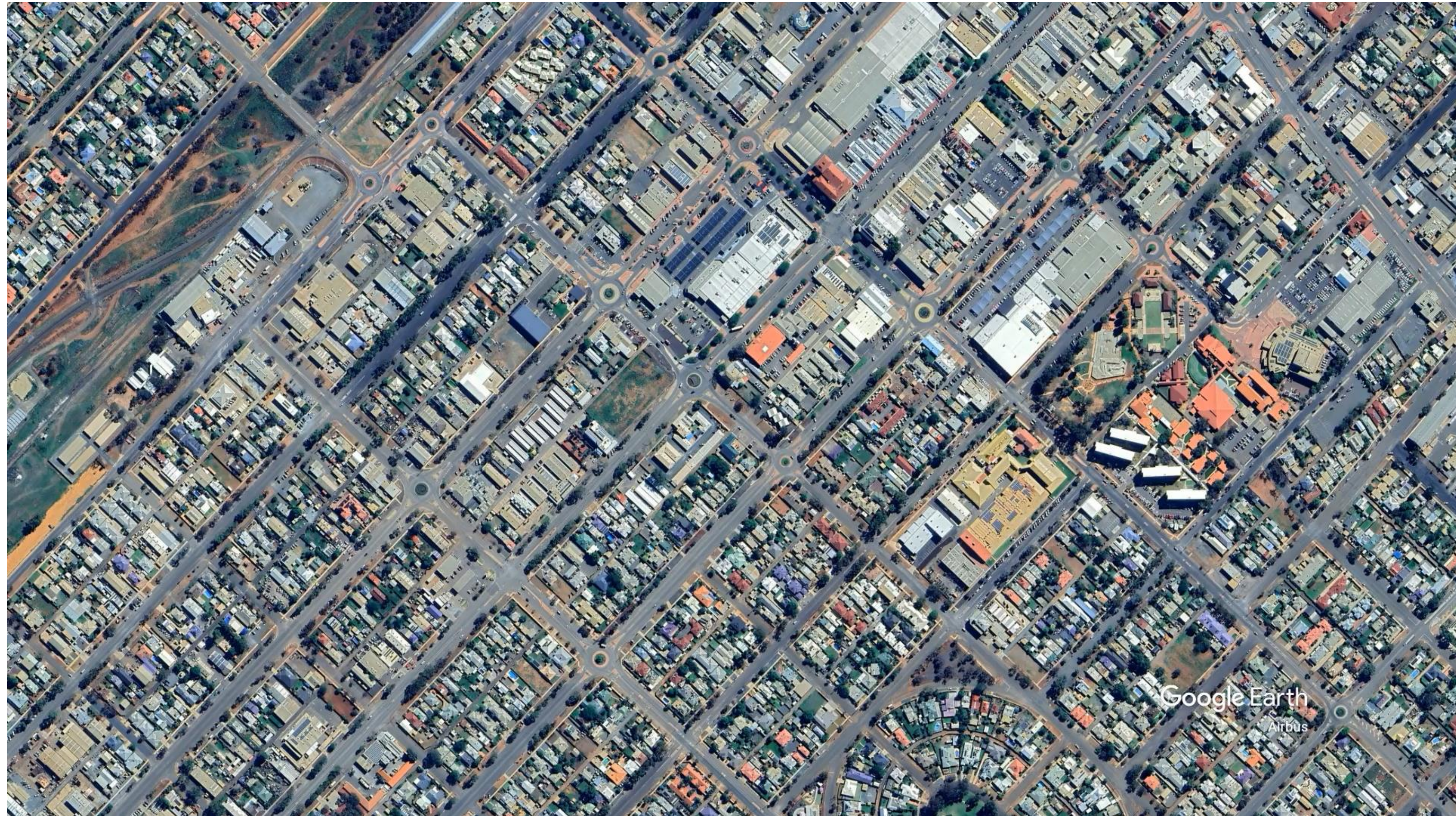


**WA'S CHEMICALS AND MINERALS PROCESSING INDUSTRIAL ZONE**

# VISION

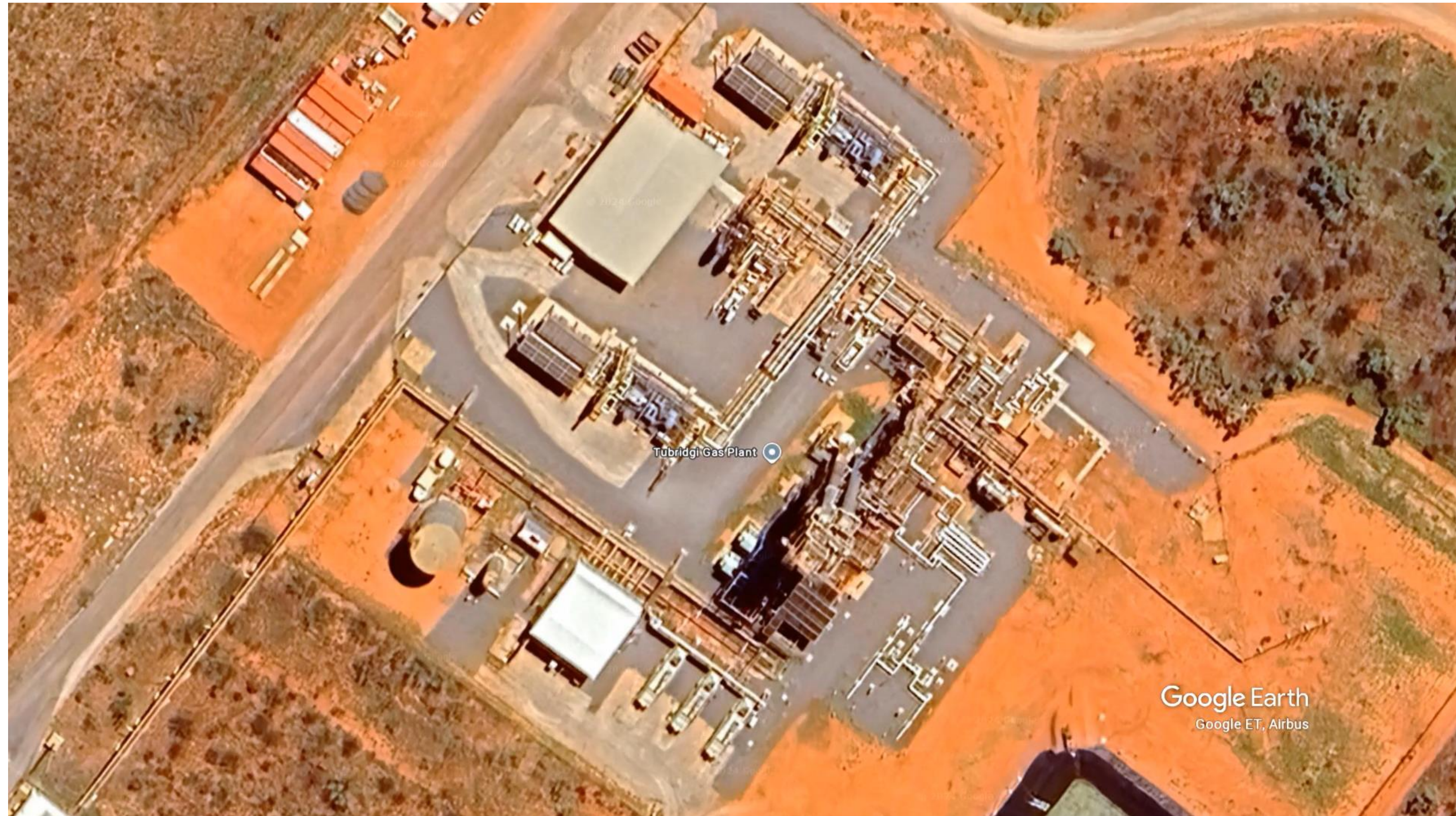
A HELICOPTER TOUR OF MINES, ENERGY SOURCE AND PROCESSING FACILITY WHICH I HAVE SUPPORTED

# KALGOORLIE – A TOWN SERVICING GOLD MINING





# TUBRIDGI GAS FIELD – AN ENERGY SOURCE FOR MINERALS PROCESSING



# DORAL FUSED MATERIALS – ONE OF MANY FACILITIES IN THE PROCESSING ZONE



# PLAN

**“EFFORT IS NEEDED TO IMPROVE THE POLICY AND REGULATORY FRAMEWORK, BOOST INVESTMENT PROMOTION EFFORTS AND ENHANCE STAKEHOLDER ENGAGEMENT”**

Source:

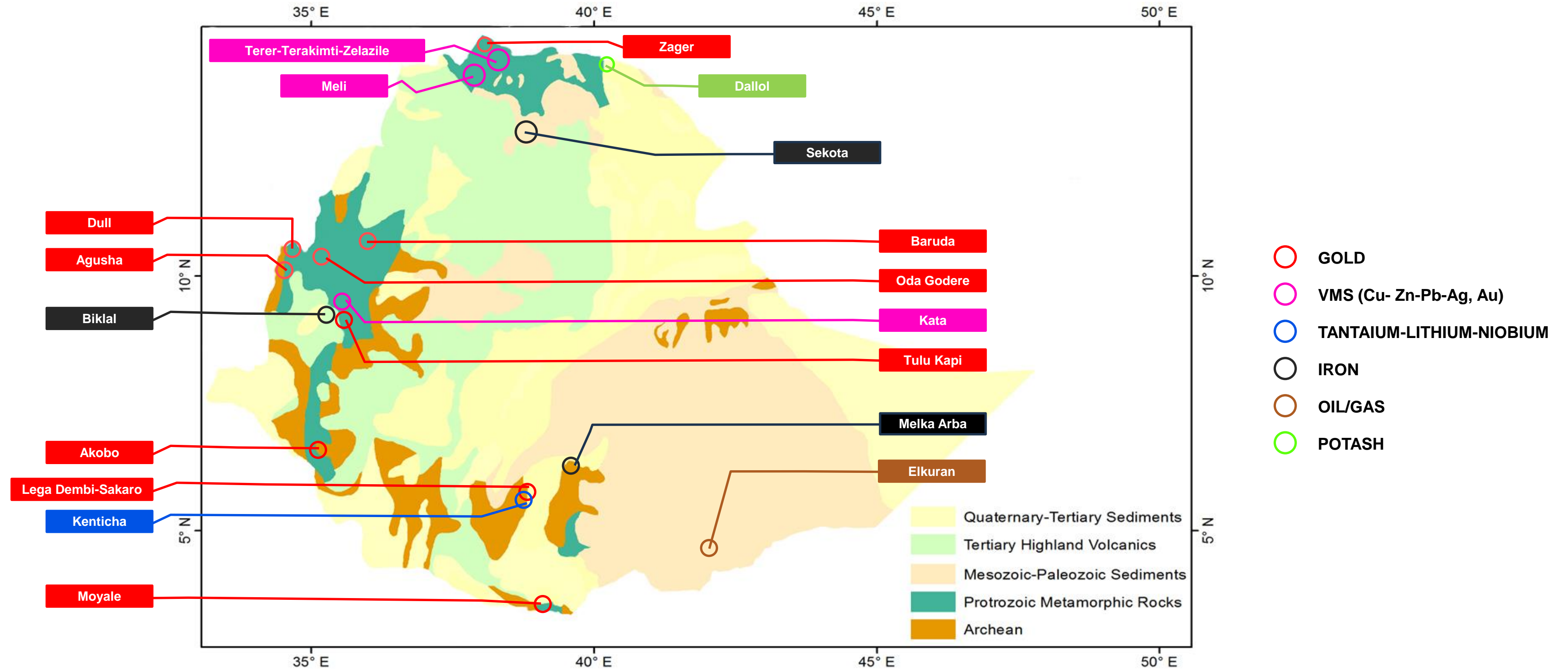
Ministry of Finance

2020 - Home Grown Economic Reform – A Pathway to Prosperity



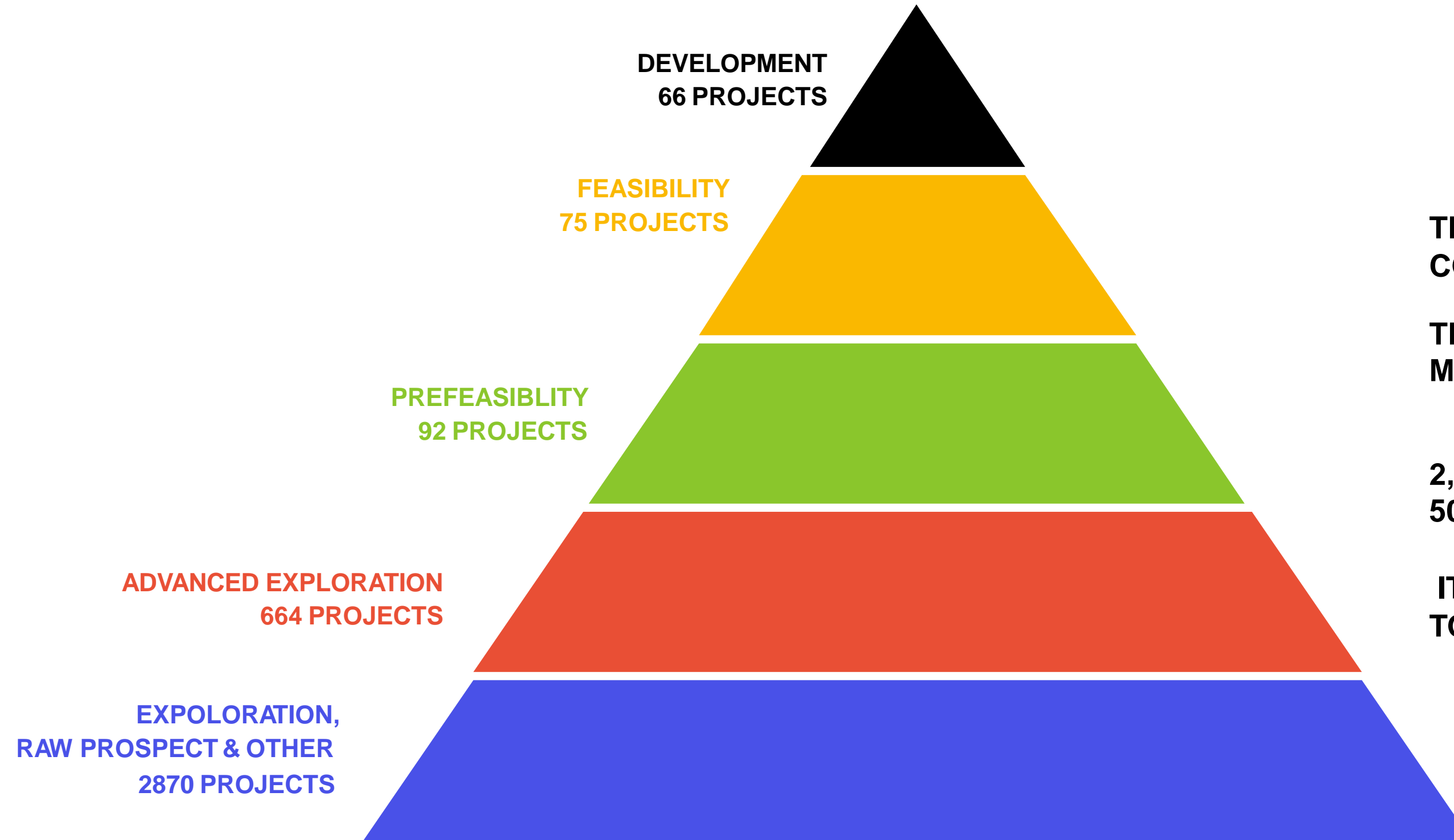
# PLAN

## ANALYSE THE LOCATION OF MINERAL BELTS, POWER GENERATION AND PORTS



# RECRUIT EXPLORERS

ACTIVATE 3000 EXPLORATION PROGRAMS  
IN ORDER TO DEVELOP 70 MINES



THIS MINING PYRAMID REFERS TO COPPER PROJECTS GLOBALLY.

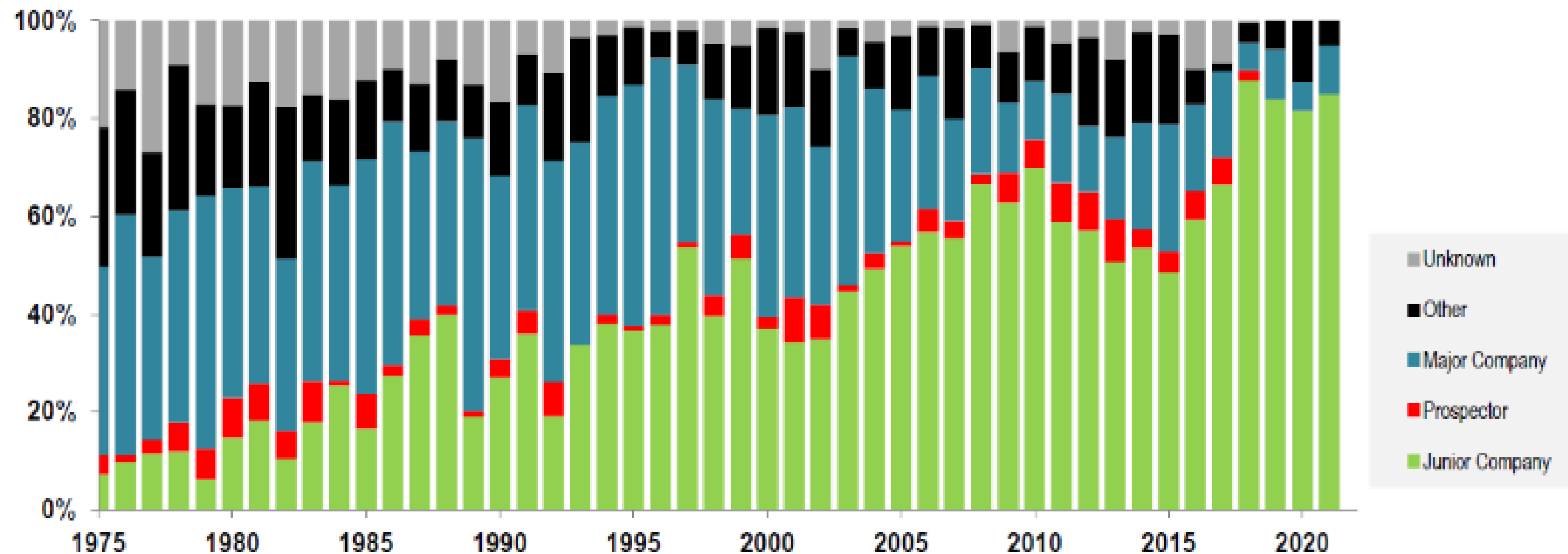
THE SAME PRINCIPLE APPLIES TO ALL MINERALS GLOBALLY.

2,870 PROSPECTS LEADS TO 66 MINES  
500 PROSPECTS LEADS TO 10 MINES.

IT TAKES 20 YEARS FOR A MINE TO EMERGE AFTER A DISCOVERY IS MADE

# RECRUIT

## INNOVATIVE AND TENACIOUS JUNIOR MINING COMPANIES MAKE THE DISCOVERIES



**THIS TABLES % SHARE OF DISCOVERIES IN WESTERN WORLD BY COMPANY TYPE 1975-2021**

**SIMILAR RESULTS APPLY TO MOST JURISDICTIONS**

**THE JUNIOR COMPANIES MAKE THE DISCOVERIES**

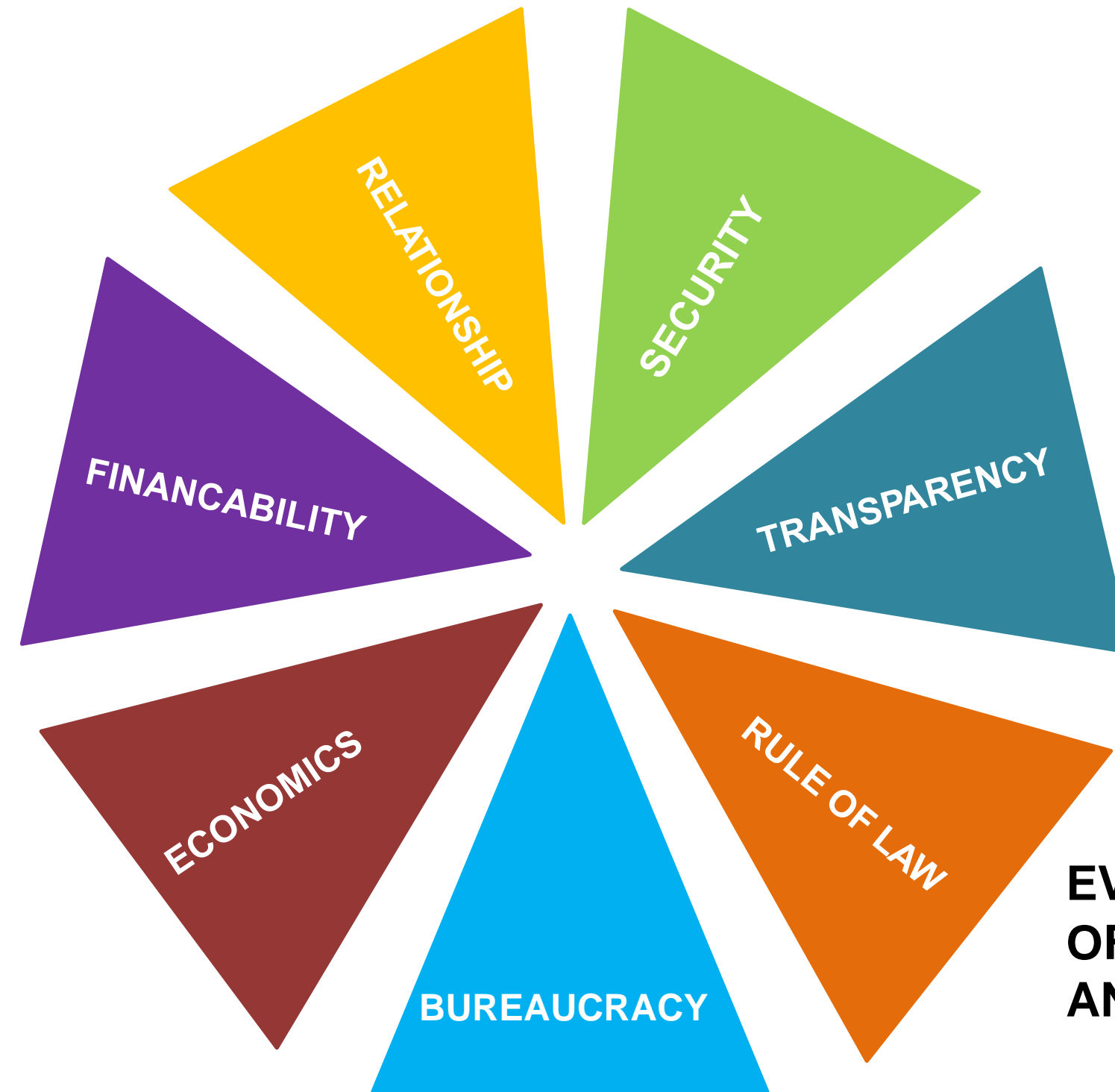
Note: Based on deposits >="Moderate" in-size, i.e. >100koz Au, >10kt Ni, >100kt Cu, >300kt Zn+Pb, >5kt U<sub>3</sub>O<sub>8</sub>, >5 Mt Heavy Minerals, >20 Mt Fe, >20 Mt Thermal Coal >10 Mt Met Coal, >3 Mt P<sub>2</sub>O<sub>5</sub> and >3 Mt K<sub>2</sub>O

Source: MinEx Consulting © June 2023

\*Other\* includes Government + Industrial Companies + Private/Unlisted Companies

# RECRUIT

INVESTORS COMPARE RISK/RETURN WITH OTHER PROJECTS IN OTHER COUNTRIES



EVERY COMPANY HAS ITS OWN VERSION OF SUCH A PROCESS, STARTING WITH SECURITY AND WORKING THROUGH ALL ISSUES.

# RECRUIT

NO. 1 CRITERION IS  
SECURITY

## TULU KAPI PROJECT DEVELOPMENT NOW PROCEEDING BECAUSE SAFETY ESTABLISHED





# TULU KAPI

## MAY-DECEMBER 2024: EARLY WORKS

- AGREEING COMMUNITY COMPENSATION FOR RESETTLEMENT
- FINALISING \$1BILL OF CONTRACTS FOR CAPEX AND OPEX
- THEN CERTIFICATIONS FOR MAJOR WORKS EARLY 2025

## 2025-2026: MAJOR WORKS

- COMMUNITY RESETTLED
- BUILD, DELIVER AND ASSEMBLE PROCESSING PLANT
- CONSTRUCT & COMMISSION MINE AND INFRASTRUCTURE

## 2027 FULL PRODUCTION:

- 1000's DIRECT AND INDIRECT EMPLOYEES
- US\$400M ANNUAL EXPORTS AT CURRENT PRICES
- EXPLORE FOR ANOTHER TULU KAPI



# VISION

40-FOLD INCREASE IN MINING'S CONTRIBUTION

# PLAN

DEVELOP OUR BACKLOG AND ATTRACT SERIOUS EXPLORERS

# RECRUIT

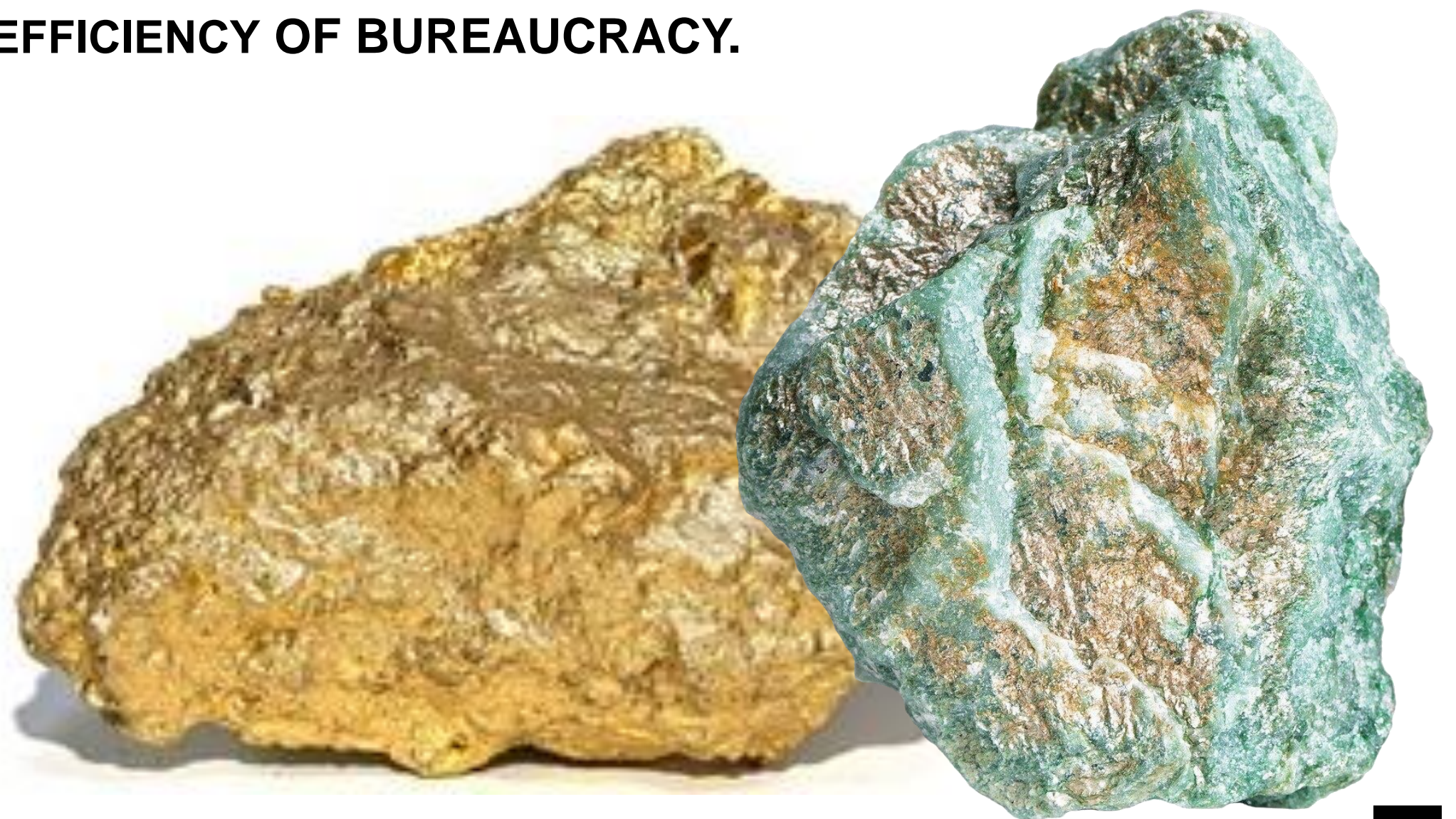
VIA SECURITY, TRANSPARENCY, EFFICIENT ADMINISTRATION

# **CLOSING COMMENTS**

**ETHIOPIA HAS A BACKLOG OF PROJECTS IN GOLD, POTASH & TANTALUM FOR EXPORTS US\$3 BILL PA**

**ETHIOPIA NEEDS MANY SERIOUS EXPLORERS TO EXPAND THE PROJECT PIPELINE TOWARDS US\$40 BILL PA**

**WE NEED SECURITY...TRANSPARENCY...RULE OF LAW...EFFICIENCY OF BUREAUCRACY.**



**THANK YOU**

**KEFI**  
GOLD + COPPER